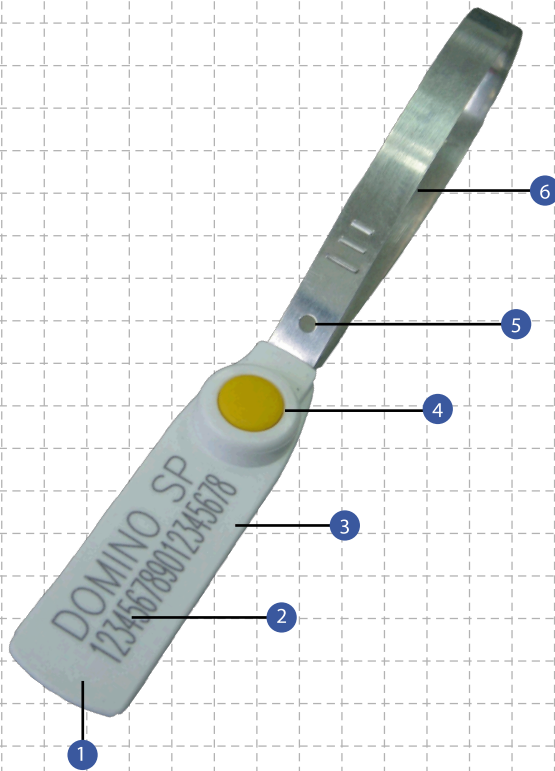


indicative seal



Fixed Length Metal Strap Seal

1. Colour coding is enabled through different coloured caps and base of seals.
2. Domino SP seals are etched with permanent laser marking for name, logo, sequential numbers & barcode. Laser marking offers the highest level of security as it cannot be removed or replaced.
3. The Domino SP is a metal strap seal that has the marking etched on a corrosion proof plastic surface. The marking therefore stays clear and legible even after long-term applications. The extra long flap also provides ample space for customized markings.
4. Heat staking is deployed to permanently fix the cap to be seal.
5. Alignment holes ensure easy inspection of proper sealing.
6. The strong and durable metal strap can withstand harsh handling and the climatic elements in a long-haul shipment.

Specifications

Product	Material	Strap Length	Strap Dimensions	Pull Strength	Marking Area	Max Marking Digits
<i>Domino SP (9mm / 7mm)</i>						
DMSP 15	Polypropylene head with tin-plated	130mm	9.0 / 7.0mm(w) x 0.28mm(t)	100kg	Flap: 40mm x 15mm	14
DMSP 22	metal strap & Stainless steel locking	200mm	9.0 / 7.0mm(w) x 0.28mm(t)	100kg	Flap: 40mm x 15mm	14
DMSP 27	mechanism	250mm	9.0 / 7.0mm(w) x 0.28mm(t)	100kg	Flap: 40mm x 15mm	14

Product	INNER CARTON		Weight kg/carton	Volume m ³ /carton	Standard Colours
	Quantity	Dimensions			
<i>Domino SP 9mm</i>					
DMSP15	1,000pcs	362mm x 222mm x 255mm	6.80	0.02049	base colour : white, white barcode & yellow cap colour : white, yellow, blue, green, red, orange & transparent
DMSP22	1,000pcs	362mm x 222mm x 255mm	8.05	0.02049	
DMSP27	1,000pcs	450mm x 230mm x 275mm	9.68	0.02846	
<i>Domino SP 7mm</i>					
DMSP7_15	1,000pcs	362mm x 222mm x 255mm	-	0.02049	
DMSP7_22	1,000pcs	362mm x 222mm x 255mm	7.19	0.02049	
DMSP7_27	500pcs	450mm x 230mm x 275mm	8.20	0.02846	

Highly Secure & Tamper Evident Strap Seal

The Domino SP is a highly secure strap seal due to its all metal locking mechanism which cannot be easily tampered without leaving clear evidence of tampering.

Typical applications include trucks and tankers, customs control, airline cargo, empty shipping container, rail wagons and warehouses.



Accepted by
US & UK Customs

Be assured of better security with our innovative use of materials and industrial design.

